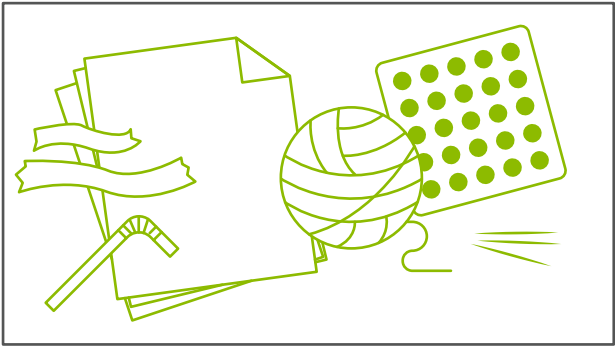


HOW TO MAKE A COLLAGRAPH

GATHER TEXTURED MATERIALS



MATERIALS



VARIETY
OF ITEMS
with different
textures



TEMPERA
PAINT
or ink



ELMER'S
GLUE
or hot glue



BRUSHES
and/or sponge
brushes



RIGID
SURFACE
such as cardboard
or chipboard for
each student



SPRAY
BOTTLE
filled with water



PRINTING
PAPER

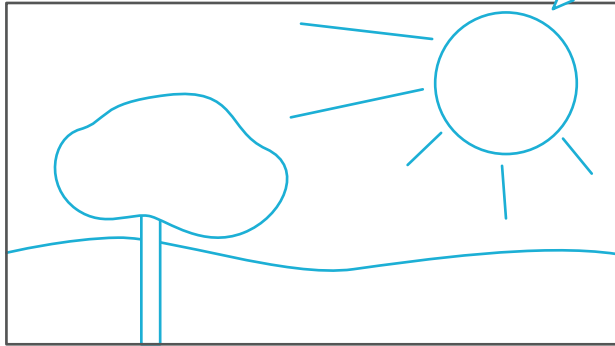


PRINTING
PRESS
or brayer
(optional)

1

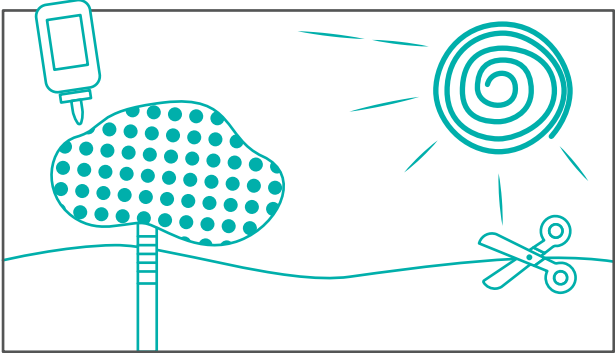
2

USING A PENCIL, DRAW DESIGNS ONTO COLLAGRAPH PLATES



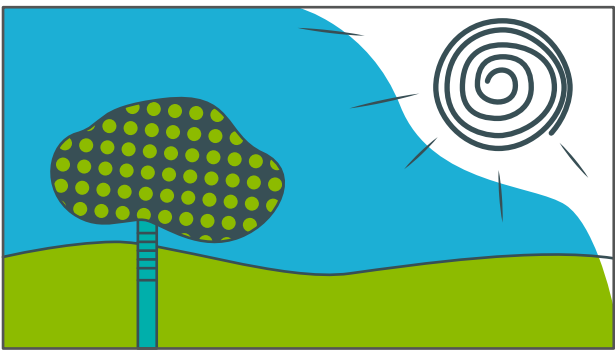
3

CUT OUT AND GLUE TEXTURED ITEMS ONTO COLLAGRAPH PLATES



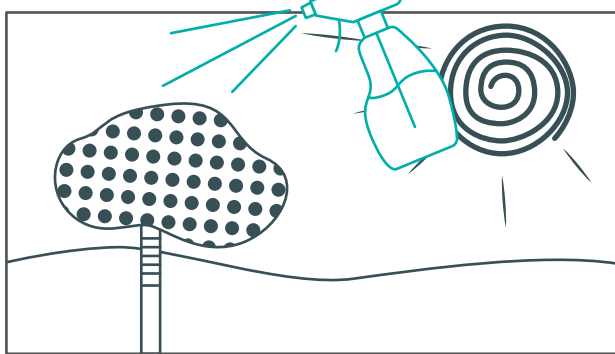
4

APPLY THE MEDIUM TO COLLA- GRAPH PLATES USING REGULAR BRUSHES OR SPONGE BRUSHES



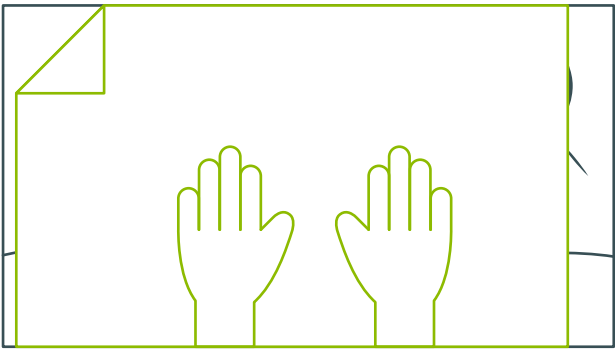
6

SPRAY THE FINISHED COLLAGRAPH PLATE WITH A WATER SPRAY BOTTLE TO RE-MOISTEN THE MEDIUM



7

CENTER THE PAPER OVER THE PLATE AND USE HANDS TO GENTLY RUB AND PRESS THE PAPER



8

DISPLAY AND ENJOY!

