

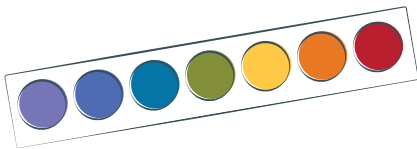
Watercolor **PROS** & **CONS**

Types of Watercolor

PROS

CONS

PAN WATERCOLORS



- Easy to distribute to individual students
- Offers access to a variety of colors at one time
- Good for fine motor practice

- Can become sticky without adequate drying time
- Colors can easily become muddy without frequent brush washing.
- Small pan size can cause frustration for beginners.

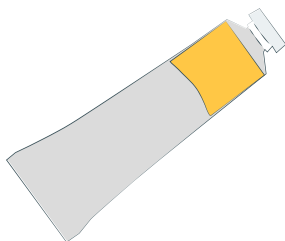
LIQUID WATERCOLORS



- Can easily mix and dilute to create a variety of colors
- Can create your own

- Can be trickier to distribute to students
- Can be more likely to spill and messier to work with

TUBE WATERCOLORS



- Cuts down on storage space
- Provides highly-concentrated color

- Costs more
- Adds difficulty for elementary students