

ACRYLIC PAINT APPLICATION

STEP 1



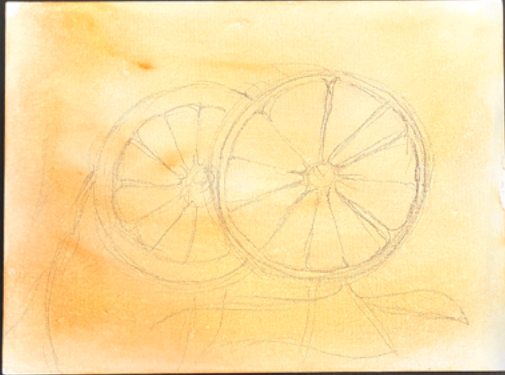
Choose an appropriate paint surface (canvas, panel, cardboard).

STEP 2



Start with a wash of a base color.

STEP 3



Lightly draw the subject and/or large areas to block off with color.

STEP 4



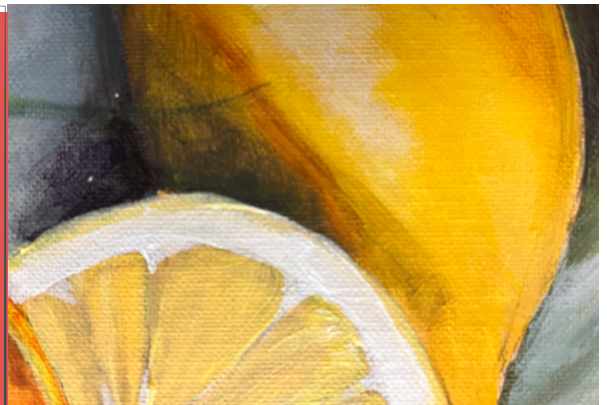
Begin to block in colors, starting with light to medium values.

STEP 5



Develop each layer and add color area by area.

STEP 6



Use a wet on dry technique when desired to avoid color blending when adding additional values or details.